



Flight Plan & Site Survey

Created using **RPAS Wilco**®

Reference No:	E2A7FC
Title:	SCRCMC HIGHER
Pilot Name:	Randall Hepner
Pilot Certificate:	[REDACTED]
Flight Start:	May 18, 2024 11:53 AM
Flight End:	May 18, 2024 1:53 PM
Flight Area (Latitude):	50° 56' 7.00" N (50.935)
Flight Area (Longitude):	113° 50' 38.30" W (-113.844)
Altitude - Radius:	Alt: 1200 ft - Rad: 926.0 m (0.5 nm)
Classification:	UNCONTROLLED
FIR - Contact:	CZEG - 506-867-7771

Please ensure you received all required authorizations prior to flight.

Disclaimer

This Site Survey was created using RPAS Wilco by AIM Robotics. The flight plan contained is intended only for RPAS flights on the date/time and location specified. The user accepts all responsibility for the accuracy and completeness of the information contained.

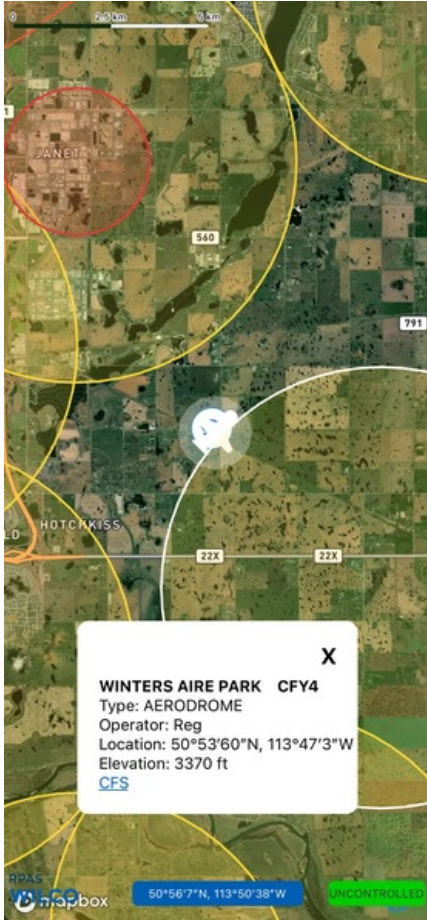
For the complete Terms & Conditions, see

<https://rpaswilco.com/#/tnc>

Included

- Site Survey
- Obstacles (if available)
- Nearby Aerodromes
- Canadian Aviation Regulations
- GFA
- Aerodrome Supplements
 - METAR & TAF (if available)
 - NOTAMS
 - CFS



Flight Map



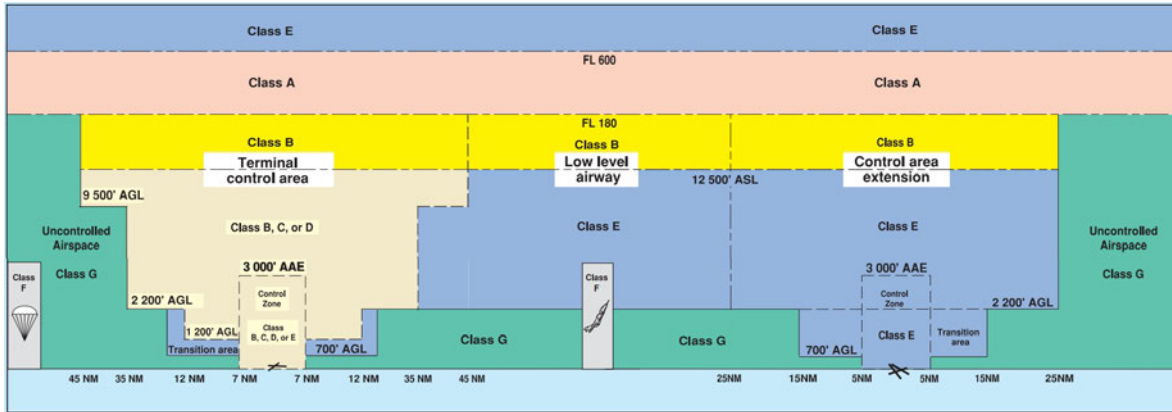
RPAS Specification

- **Manufacturer:**
MAAC
- **Model:**
MODEL AIRPLANE
- **Registration Number:**
[REDACTED]
- **Eligible for advanced operations:**
Yes
- **Manufacturer RPAS safety assurance:**
 - **Controlled Airspace:** YES
 - **Near People:** NO
 - **Over People:** NO

MAP Details

	Latitude	Longitude
 MODEL	50° 56' 7.00" N (50.935)	113° 50' 38.30" W (-113.844)
 Pilot Randall Hepner	50° 56' 10.60" N (50.9363)	113° 50' 41.90" W (-113.845)

Airspace Classification



Overlying Airspaces

Class	Name	Floor	Ceiling
E	Calgary, AB CAE	5800MSL	12500MSL
B	Calgary, AB CAE	12500MSL	18000MSL
B	Calgary, AB TCA	12500MSL	18000MSL
C	Calgary, AB TCA	8000MSL	12500MSL
C	Calgary, AB TCA	5500MSL	8000MSL
C	Calgary, AB TCA	4800MSL	5500MSL
E	T727 Airway	2200AGL	12500MSL
B	T727 Airway	12500MSL	18000MSL

Nearest Aerodromes & Distance from Operation

WINTERS AIRE PARK (CFY4 - AERODROME - Reg)	Lat: 50.9	Long: -113.784	5.75KM	3.1NM	SE
BLUE-CON (CBC6 - HELIPOINT - Cert)	Lat: 50.997	Long: -113.894	7.706KM	4.16NM	NW
SOUTH CALGARY (CEH4 - AERODROME - Reg)	Lat: 50.822	Long: -113.824	12.674KM	6.84NM	S
CALGARY (EAST LAKE) (CEL9 - HELIPOINT - Cert)	Lat: 50.955	Long: -113.973	9.302KM	5.02NM	W
SOUTH HEALTH CAMPUS (HOSP) (CSH3 - HELIPOINT - Cert)	Lat: 50.883	Long: -113.952	9.548KM	5.16NM	SW

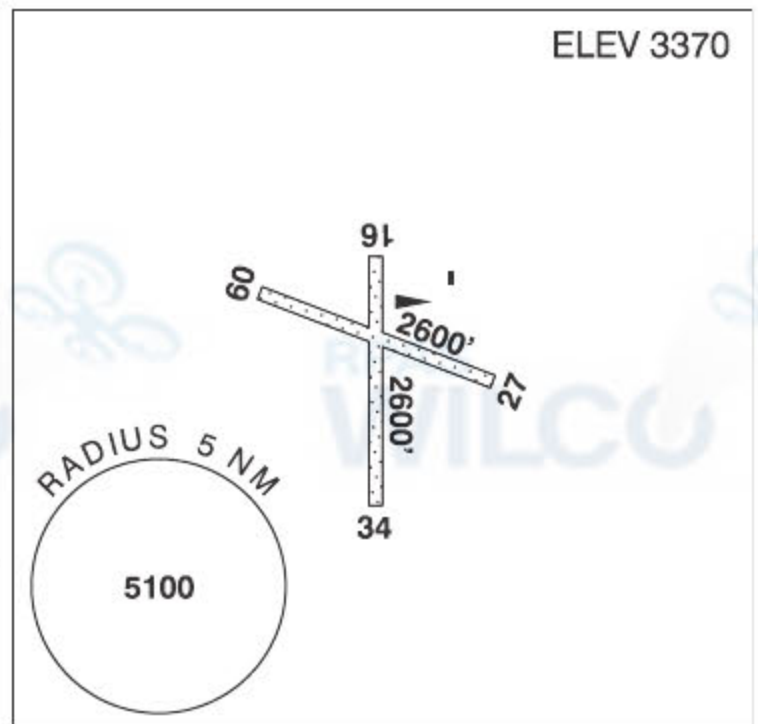
ALBERTA

AERODROME/FACILITY DIRECTORY

INDUS / WINTERS AIRE PARK AB

CFY4

REF	N50 54 W113 47 1SW 15°E (2012) UTC-7(6) Elev 3370' VTA A5005
OPR	Blue Yonder Avn 403-936-5767 Reg PPR
PF	B-1 D-2,3,4,5,6
FLT PLN	
FIC	Edmonton 866-WXBRIEF (Toll free within Canada) or 866-541-4102 (Toll free within Canada & USA)
ACC	Edmonton IFR 888-358-7526
SERVICES	
FUELS	MG-1 1,2
RWY DATA	Rwy 09(096°)/27(276°) 2600x75 GRASS Rwy 16(165°)/34(345°) 2600x75 GRASS
RCR	Opr Ltd maint, sfc ruf.
COMM	
ATF	tfc 123.2 5NM 4800 ASL



ALBERTA

AERODROME/FACILITY DIRECTORY

CALGARY / BLUE-CON AB (Heli)

CBC6

REF	N50 59 49 W113 53 38 2E 14°E (2014) UTC-7(6) Elev 3440' VTA A5005	
OPR	Matt Haasen 403-273-1144 Cert PN	
PF	A-1 C-2,3,4,5,6	
FLT PLN		
FIC	Edmonton 866-WXBRIEF (Toll free within Canada) or 866-541-4102 (Toll free within Canada & USA)	
ACC	Edmonton IFR 888-358-7526	
HELI DATA	FATO/TLOF 86' dia CONC Safety Area 87' dia Max heli overall length 42.7'	
RCR	Opr Day VFR only	
COMM		
VFR ADV	119.4	
PRO	Arr/dep 239° to 254° and 175° to 194° fr heli, slope 6% (H3).	
CAUTION	P-line oriented N-S adj E heli. Poles and wires are day marked in the vic of heli.	

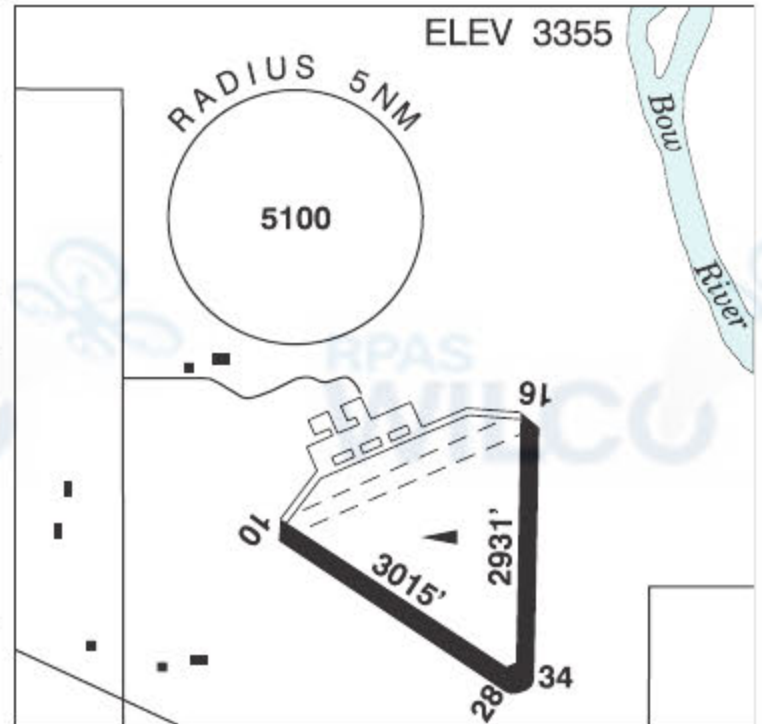
ALBERTA

AERODROME/FACILITY DIRECTORY

DE WINTON / SOUTH CALGARY AB

CEH4

REF	N50 49 19 W113 49 28 7E 15°E (2012) UTC-7(6) Elev 3355' VTA A5005
OPR	Cordillera Petroleum of Canada Ltd 403-243-5326 Reg PPR
PF	D-1,2,3,4,5,6
FLT PLN	
FIC	Edmonton 866-WXBRIEF (Toll free within Canada) or 866-541-4102 (Toll free within Canada & USA)
ACC	Edmonton IFR 888-358-7526
RWY DATA	Rwy 10/28 3015x150 asphalt Rwy 16/34 2931x150 asphalt
RCR	Opr No win maint
COMM	
ATF	UNICOM ltd hrs O/T tfc 122.8 5NM 6400 ASL
CAUTION	Rwy 10/28 and 16/34 sfcs deteriorating.



ALBERTA

AERODROME/FACILITY DIRECTORY

CALGARY (EASTLAKE) AB (Heli)

CEL9

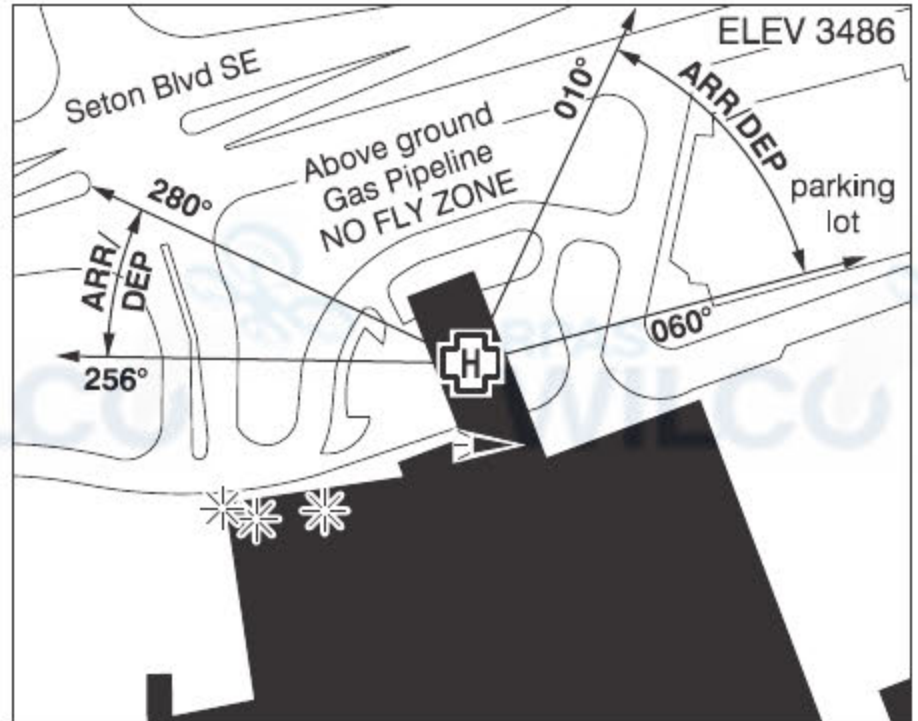
REF	N50 57 18 W113 58 22 Adj 15°E (2013) UTC-7(6) Elev 3418' VTA A5005	
OPR	Al Morrison 403-540-1125 Cert PPR	
PF	A-1 C-2,3,4,5,6	
FLT PLN		
FIC	Edmonton 866-WXBRIEF (Toll free within Canada) or 866-541-4102 (Toll free within Canada & USA)	
ACC	Edmonton IFR 888-358-7526	
HELI DATA	FATO 54' x 54' non-supporting TLOF 45' x 45' CONC Safety Area 85' x 85' 5,000 lbs	
RCR	Opr 14-03Z†	
LIGHTING	RF(LO)	
COMM		
VFR ADV	119.4	
PRO	Arr/dep 075° to 120° fr heli slope 16% (H3), day/night use. Arr/dep 255° fr heli, slope 8% (H3), day/night use. Avoid Calgary Animal Shelter Adj NE	
CAUTION	Avoid p-line to W of heli along N-S road when using 255° path. Lgtd twr 3890 ASL (465 AGL) 0.7NM SSE.	

ALBERTA

AERODROME/FACILITY DIRECTORY

CALGARY / SOUTH HEALTH CAMPUS (HOSP) AB (Heli)

CSH3



REF	N50 52 58 W113 57 07 11SE 15°E (2013) UTC-7(6) Elev 3486' VTA A5005
OPR	Alberta Health Services 403-956-1000 Cert NVIS OPS AUTH PPR
PF	A-1,4 C-2,3,5,6
FLT PLN	
FIG	Edmonton 866-WXBRIEF (Toll free within Canada) or 866-541-4102 (Toll free within Canada & USA)
ACC	Edmonton IFR 888-358-7526
HELI DATA	FATO 86' dia non-supporting TLOF 57' x 57' CONC elevated rooftop, 18,000 lbs Safety Area 115' dia Max heli overall length 57.4'
RCR	Opr
LIGHTING	RY(ME) PPR
COMM	
VFR ADV	119.4
PRO	Arr/dep 010° to 060° and 256° to 280° fr heli, (H1) (CAR 602.96) Do not overfly abv-gnd gas pipeline (see sketch).
CAUTION	Lgtd elevator 72' S of heli. Multiple light poles N of heli.

Canadian Aviation Regulations

Division III — General Operating and Flight Rules

For full listing please visit : <https://laws-lois.justice.gc.ca/eng/regulations/SOR-96-433/FullText.html#s-901.27>

Visual Line-of-sight

- **901.11 (1)** Subject to subsection (2), no pilot shall operate a remotely piloted aircraft system unless the pilot or a visual observer has the aircraft in visual line-of-sight at all times during flight.
- **(2)** A pilot may operate a remotely piloted aircraft system without the pilot or a visual observer having the aircraft in visual line-of-sight if the operation is conducted in accordance with a special flight operations certificate — RPAS issued under section 903.03.

Procedures

- **901.23 (1)** No pilot shall operate a remotely piloted aircraft system unless the following procedures are established:
 - **(a)** normal operating procedures, including pre-flight, take-off, launch, approach, landing and recovery procedures; and
 - **(b)** emergency procedures, including with respect to
 - **(i)** a control station failure,
 - **(ii)** an equipment failure,
 - **(iii)** a failure of the remotely piloted aircraft,
 - **(iv)** a loss of the command and control link,
 - **(v)** a fly-away, and
 - **(vi)** flight termination.
- **(2)** If the manufacturer of the remotely piloted aircraft system provides instructions with respect to the topics referred to in paragraphs (1)(a) and (b), the procedures established under subsection (1) shall reflect those instructions.
- **(3)** No pilot shall conduct the take-off or launch of a remotely piloted aircraft unless the procedures referred to in subsection (1) are reviewed before the flight by, and are immediately available to, each crew member.
- **(4)** No pilot shall operate a remotely piloted aircraft system unless the operation is conducted in accordance with the procedures referred to in subsection (1).

Site Survey

901.27 No pilot shall operate a remotely piloted aircraft system unless, before commencing operations, they determine that the site for take-off, launch, landing or recovery is suitable for the proposed operation by conducting a site survey that takes into account the following factors:

- **(a)** the boundaries of the area of operation;
- **(b)** the type of airspace and the applicable regulatory requirements;
- **(c)** the altitudes and routes to be used on the approach to and departure from the area of operation;
- **(d)** the proximity of manned aircraft operations;
- **(e)** the proximity of aerodromes, airports and heliports;
- **(f)** the location and height of obstacles, including wires, masts, buildings, cell phone towers and wind turbines;
- **(g)** the predominant weather and environmental conditions for the area of operation; and
- **(h)** the horizontal distances from persons not involved in the operation.

Operations at or in the Vicinity of an Aerodrome, Airport or Heliport

- **901.47 (1)** No pilot shall operate a remotely piloted aircraft at or near an aerodrome that is listed in the *Canada Flight Supplement* or the *Water Aerodrome Supplement* in a manner that could interfere with an aircraft operating in the established traffic pattern.
- **(2)** Subject to section 901.73, no pilot shall operate a remotely piloted aircraft at a distance of less than
 - **(a)** three nautical miles from the centre of an airport; and
 - **(b)** one nautical mile from the centre of a heliport.
- **(3)** No pilot shall operate a remotely piloted aircraft at a distance of less than three nautical miles from the centre of an aerodrome operated under the authority of the Minister of National Defence unless the operation is conducted in accordance with a special flight operations certificate — RPAS issued under section 903.03.

Records

- **901.48 (1)** Every owner of a remotely piloted aircraft system shall keep the following records:
 - **(a)** a record containing the names of the pilots and other crew members who are involved in each flight and, in respect of the system, the time of each flight or series of flights; and
 - **(b)** a record containing the particulars of any mandatory action and any other maintenance action, modification or repair performed on the system, including
 - **(i)** the names of the persons who performed them,
 - **(ii)** the dates they were undertaken,
 - **(iii)** in the case of a modification, the manufacturer, model and a description of the part or equipment installed to modify the system, and
 - **(iv)** if applicable, any instructions provided to complete the work.
- **(2)** Every owner of a remotely piloted aircraft system shall ensure that the records referred to in subsection (1) are made available to the Minister on request and are retained for a period of
 - **(a)** in the case of the records referred to in paragraph (1)(a), 12 months after the day on which they are created; and
 - **(b)** in the case of the records referred to in paragraph (1)(b), 24 months after the day on which they are created.
- **(3)** Every owner of a remotely piloted aircraft system who transfers ownership of the system to another person shall, at the time of transfer, also deliver to that person all of the records referred to in paragraph (1)(b).